

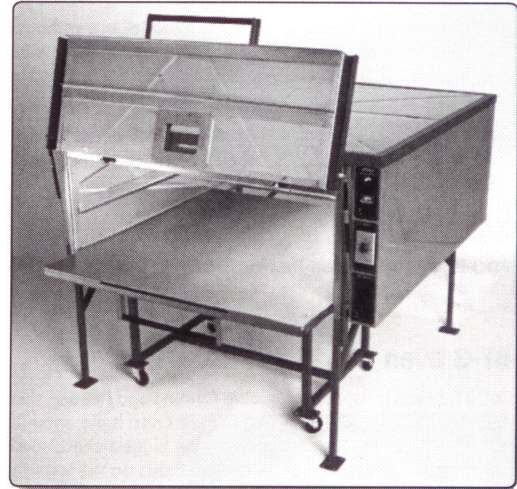


**INFRARED OVENS**

**ROLLABOUT TRAY OVEN**

Bottom of oven is a Non-stick silicone epoxy tray mounted on casters that can be rolled to where the plastic is needed. The tray height is adjustable for either bubble forming of flat plastic use. Digital temperature controller is accurate to within 2°F.

220V - 208V, 30-50A single phase power  
650W infrared quartz elements except model 8E which uses eight 1000W elements



Reference	Interior Dimensions
PDQ-5A	29" x 38" x 20"
PDQ SPECS-6B	36" x 48" x 20"
PDQ-7C	48" x 48" x 20"
PDQ-8E	48" x 60" x 20"

**THERMOPLASTIC DRAPING OVEN**

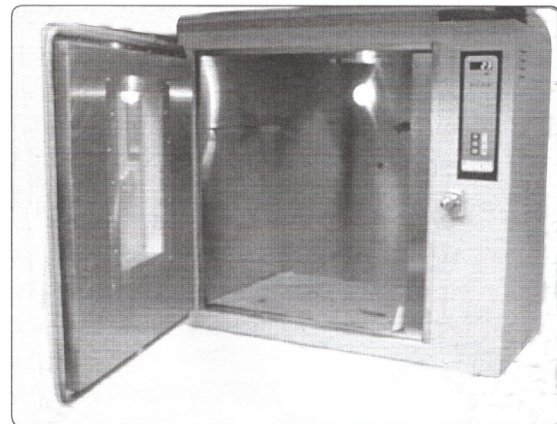
This oven has been specifically designed for the softening of thermoplastic sheet materials prior to draping over vacuum-forming mold. The oven air temperature is accurately controlled by a digital indicating controller. An internal light and a window in the door allows state of the material to be easily observed. The oven has a single side hinged door and a pair of shelf runners near the top of the chamber to accept the user's frame which clamps the material. The oven is designed for bench mounting, but stands are available at an additional cost.

**Temperature**

- Normal Working Temperature Range 50°C - 300°C
- Maximum Operating Temperature 300°C
- Temperature Stability is better than ±1°C under steady state conditions
- Temperature Uniformity is better than ±5°C
- Temperature Sensor Type "K" Mineral insulated thermocouple

**Dimensions**

- Interior Chamber, 28.5" (720mm) high x 24" (610mm) wide x 19" (480mm) deep
- Approximate External, 34.25" (870mm) high x 37" (940mm) wide x 24" (610mm) deep



**Controls**

- Temperature Controller has both a highly accurate self-tuning feature and ramp-to-setpoint capability. A large bright green digital LED will display either the setpoint or process temperature. The controller push buttons and digital display are mounted behind, but integrally incorporated in the design of an attractive wipe clean polyester membrane. Temperature may be displayed in degrees C or F.
- Power Control, Thyristor based solid state relay working in the fast cycle zero voltage switching model

Ref.: END941502 Thermoplastic Draping Oven

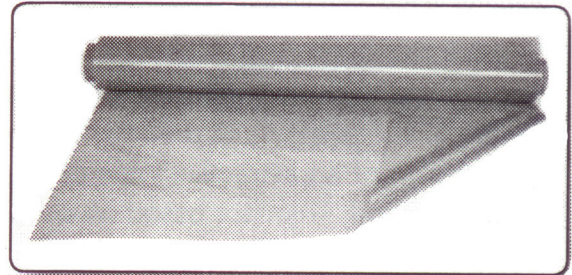
**INFRARED OVENS**

**FLOURGLAS TEFLON SHEETING**

Use in vacuum forming to transport heated plastic sheets.

Width: 36"

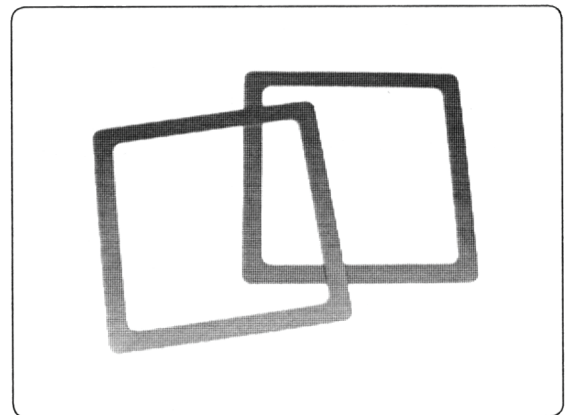
Ref.: AC-700028      3 Mil    36" wide, 1 Yard  
 Ref.: AC-700029      6 Mil    36" wide, 1 Yard  
 Ref.: AC-700030      10 Mil   38" wide, 1 Yard



**HOLDING FRAMES**

For vacuum forming. Stainless steel.

Reference	Interior Dimensions	Unit
PEL-227420	12" x 12"	1 PAIR
PEL-227438	16" x 16"	1 PAIR
PEL-227443	18" x 18"	1 PAIR
PEL-227449	20" x 20"	1 PAIR
PEL-227451	24" x 24"	1 PAIR
PEL-227458	30" x 30"	1 PAIR



**THERMO GLOVES**

Recommended for applications requiring less heat and abrasion protection but more flexibility and dexterity.

Offers heat insulation protection up to 250°F, plus 2½ times the wear of 24 oz. cotton hot mill gloves. 10" length.

Ref.: PEL-42-315M      Medium  
 Ref.: PEL-42-315L      Large  
 Ref.: FS-42-474        Long, 14"



**PDQ OVEN GLOVES**

Terry-cloth gloves are thick enough to protect against the heat, yet thin enough to enable you to "feel" the plastic.

11" long past wrist to completely cover forearms.

Ref.: PEL-AD-GL

